

3 Building Elevators are Virtually Private Serving a Maximum of 12 Tenants

Reception Includes:
2 Sumptuous Reception Chairs
B&B Mera Marble Coffee Table
Wall Mounted 32 in Samsung led TV



Tilt-Turn Operable Windows on all Four Sides

145 E. 57th Street

Entire 12th Floor - 4,250 RSF

Top of The Building - Panoramic Views

Click for 3D Tour

Fully Furnished Including:

- Over \$300k of Custom Furniture
- 3 Oversized Samsung LED TV's
- Avaya Phone System
- DVR Security System with Cameras

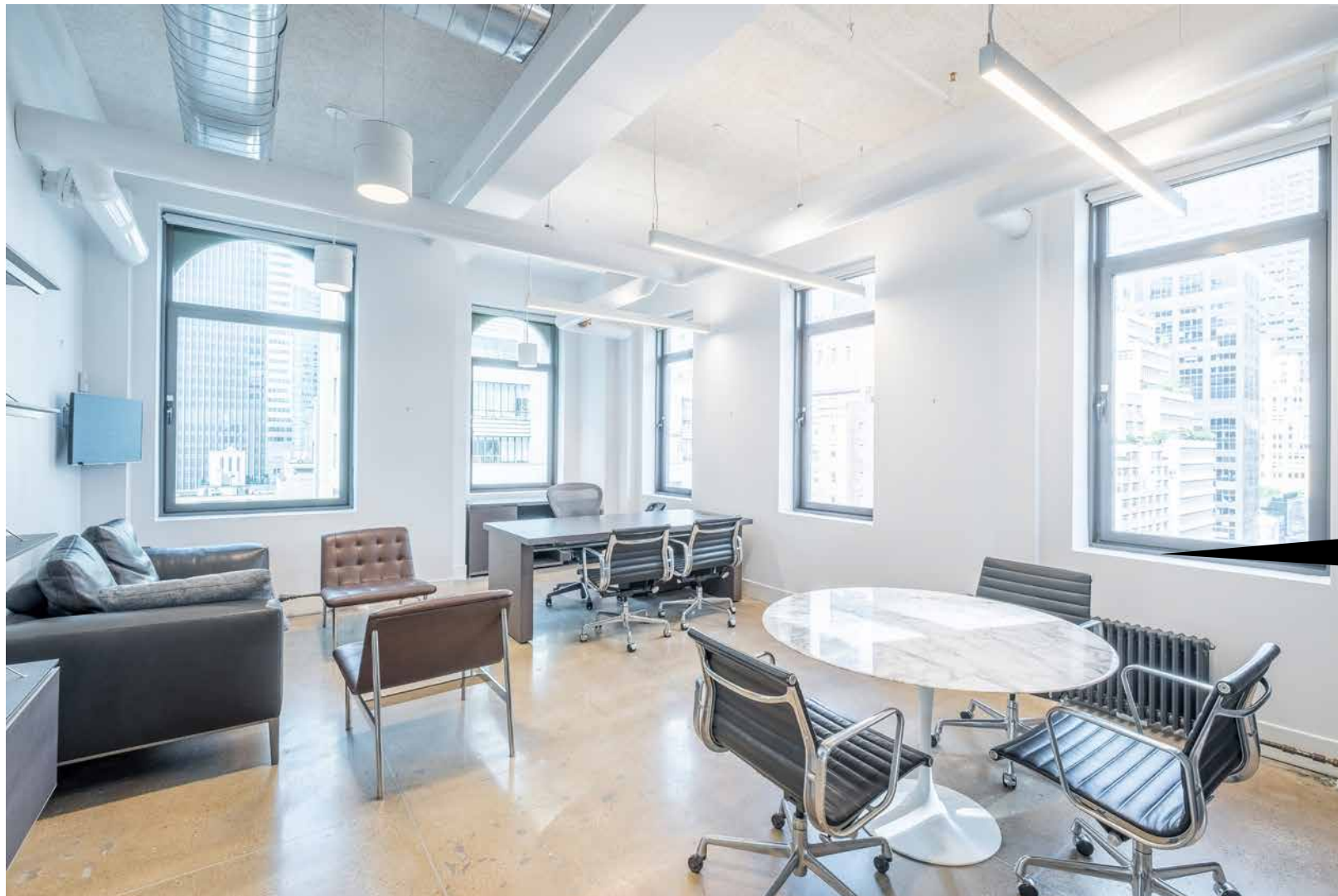
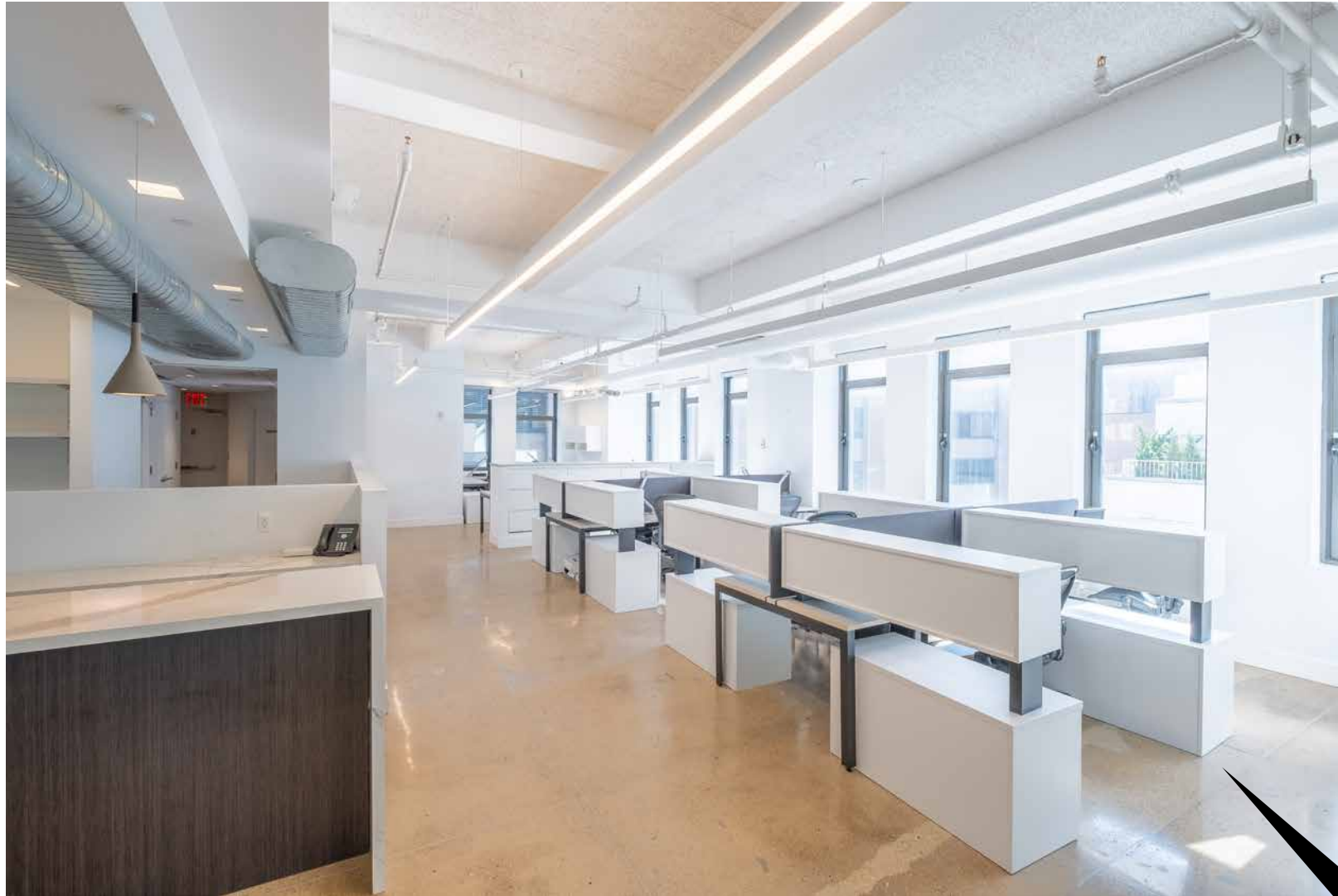
Recently Custom Built - Available Immediately
Short or Long Term Lease

CONTACT EXCLUSIVE AGENT OR VISIT 145E57.COM



John Brod
212.400.9521
jbrod@absre.com

Robert Finkelstein
212.400.9525
rfinkelstein@absre.com



Open Work Area Includes:
8 Herman Miller Work Stations
8 Aeron Desk Chairs
4 File Cabinets

Conference Room Includes:
Back Panted Glass Conference Room Table
6 Copper Herman Miller Eames Chairs
B&B Italia Credenza
Wall mounted 75 inch Samsung led TV

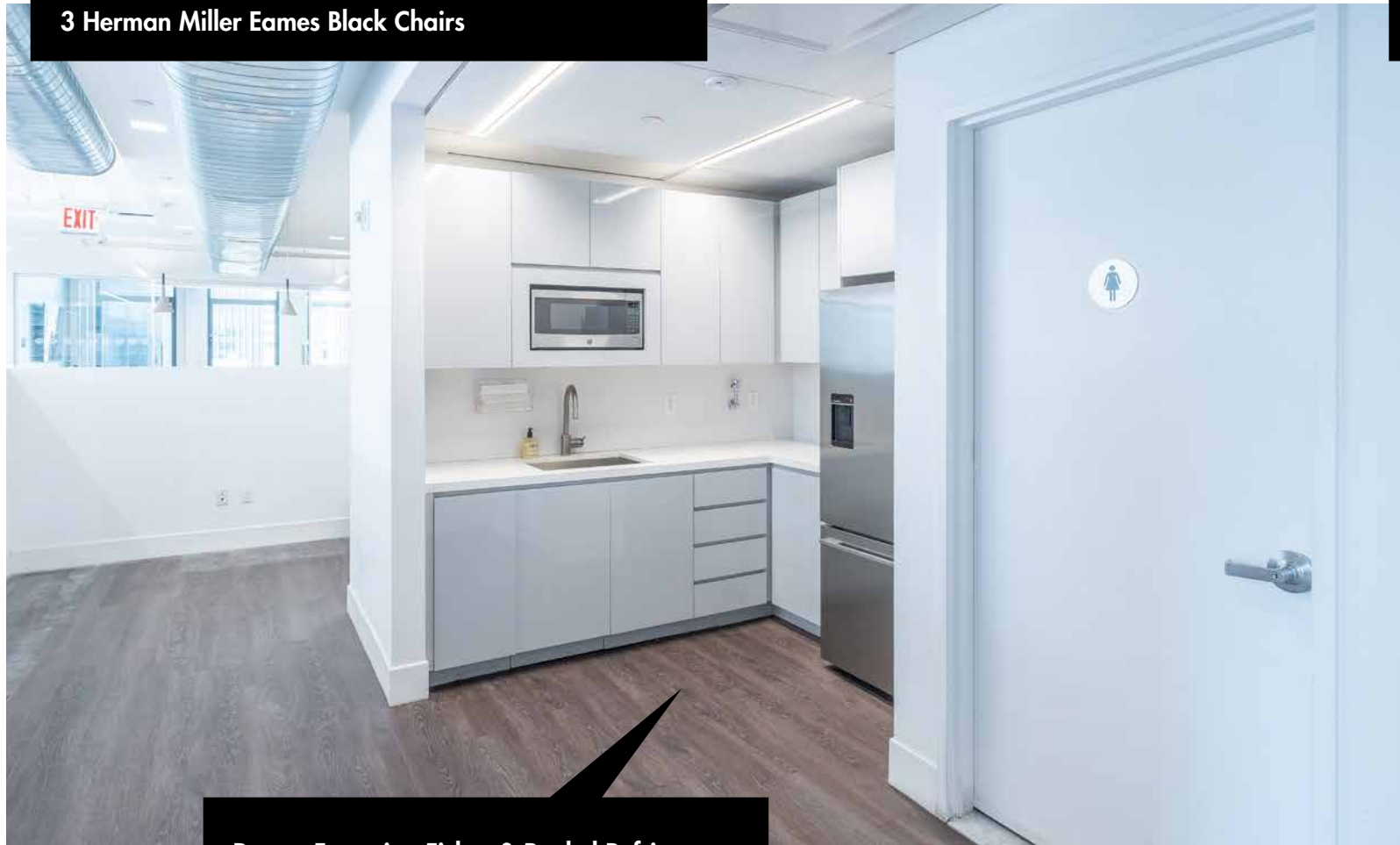
Executive Office Includes:
B&B Italia Desk/Credenza/File cabinet
Aeron Desk Chair
B&B Italia Wall Mounted Shelving Unit
Eero Saarinen Round Conference table
5 Herman Miller Eames Black Chairs
B&B Italia Black Leather Sofa
2 Bernhardt Lounge Chairs
Wall mounted 32 in Samsung led TV



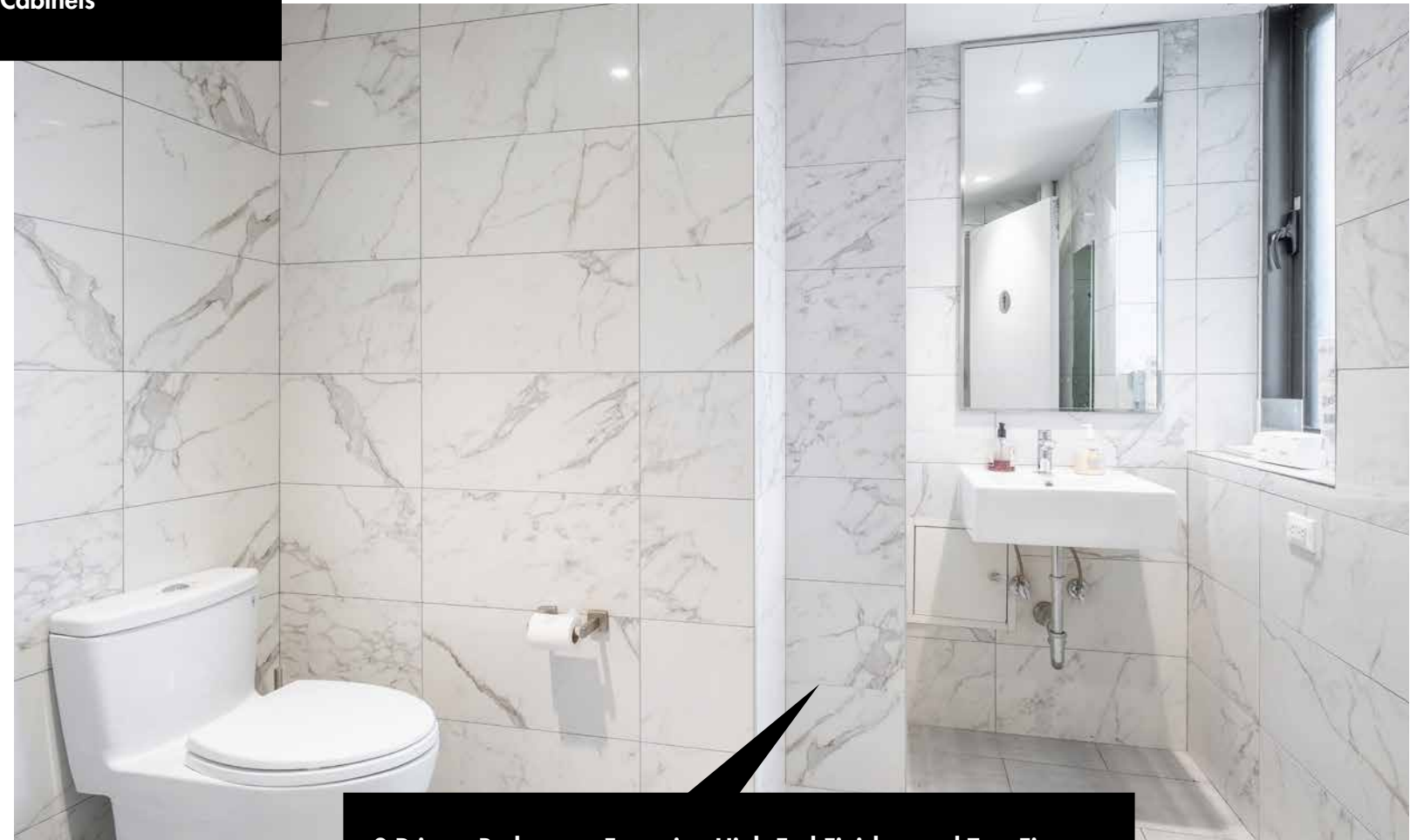
Corner Office Includes:
2 Herman Miller Desks
2 Aeron Desk Chairs
File cabinet, Book shelf
Eero Saarinen Round Conference table
3 Herman Miller Eames Black Chairs



Accounting Includes:
4 Herman Miller L Shaped Desks
4 Aeron Desk Chairs
4 File Cabinets
Overhead Cabinets

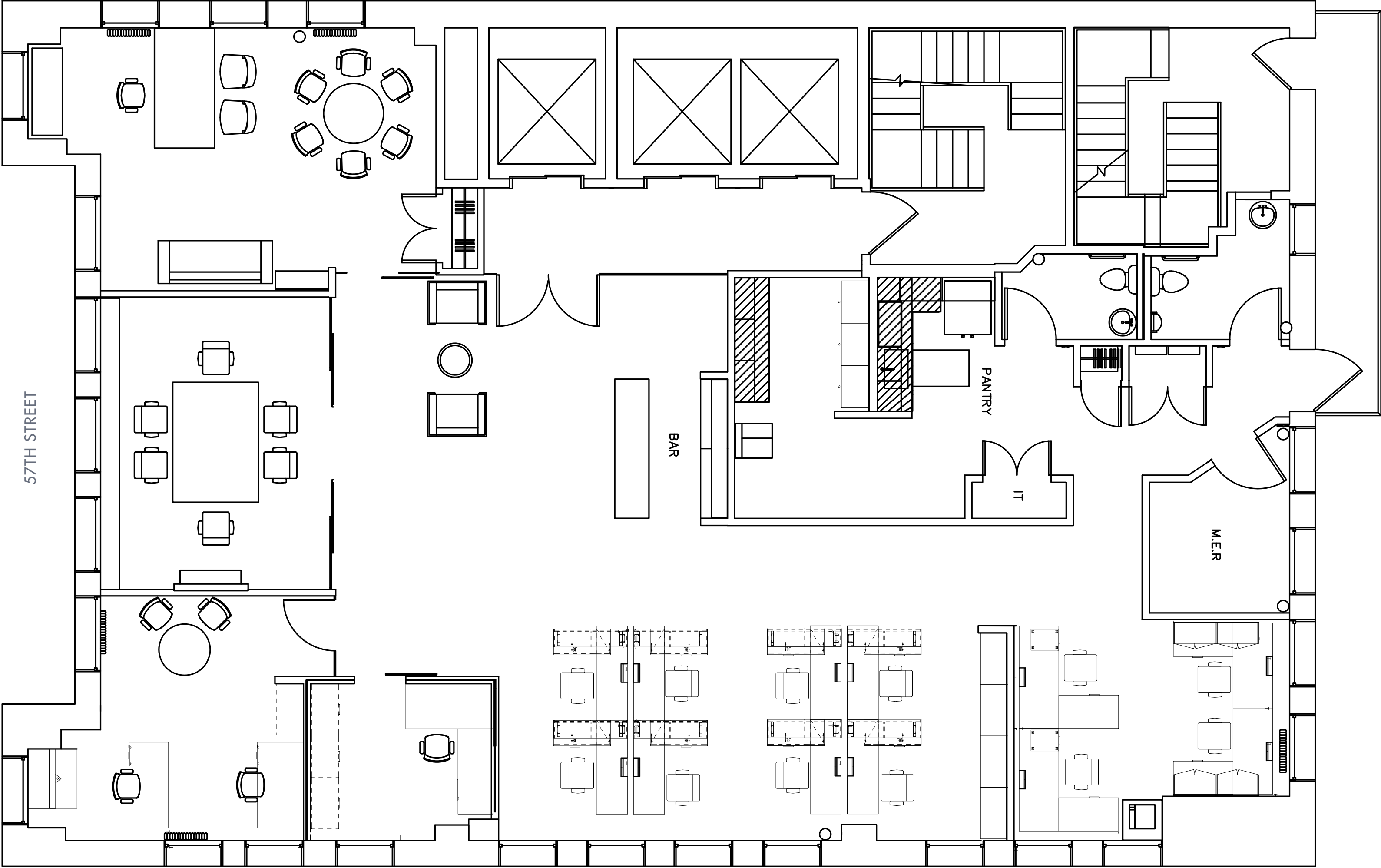


Pantry Featuring Fisher & Paykel Refrigerator



2 Private Bathrooms Featuring High-End Finishes and Toto Fixtures

ENTIRE 12TH FLOOR 4,250 RSF





○ EVERYTHING YOU COULD WISH FOR ON YOUR OWN FLOOR

Located at 145 East 57th Street, a boutique property in the heart of the Plaza District. This private full floor, built in 2018, offers and immediately available direct lease with a flexible term.

Full Floor Privacy & 24/7 Access

Sophisticated Finishes Throughout

Tilt-Turn Operable Windows on all Four Sides Providing Natural Light

Pantry Featuring Fisher & Paykel refrigerator

Tenant Controlled HVAC & Supplemental Heat for Multiple Zones Within the Workspace

Private Restrooms Featuring Toto Fixtures & 'Fresh Air Flow' System

Ceiling Heights Approx. 12 ft Floor to Slab

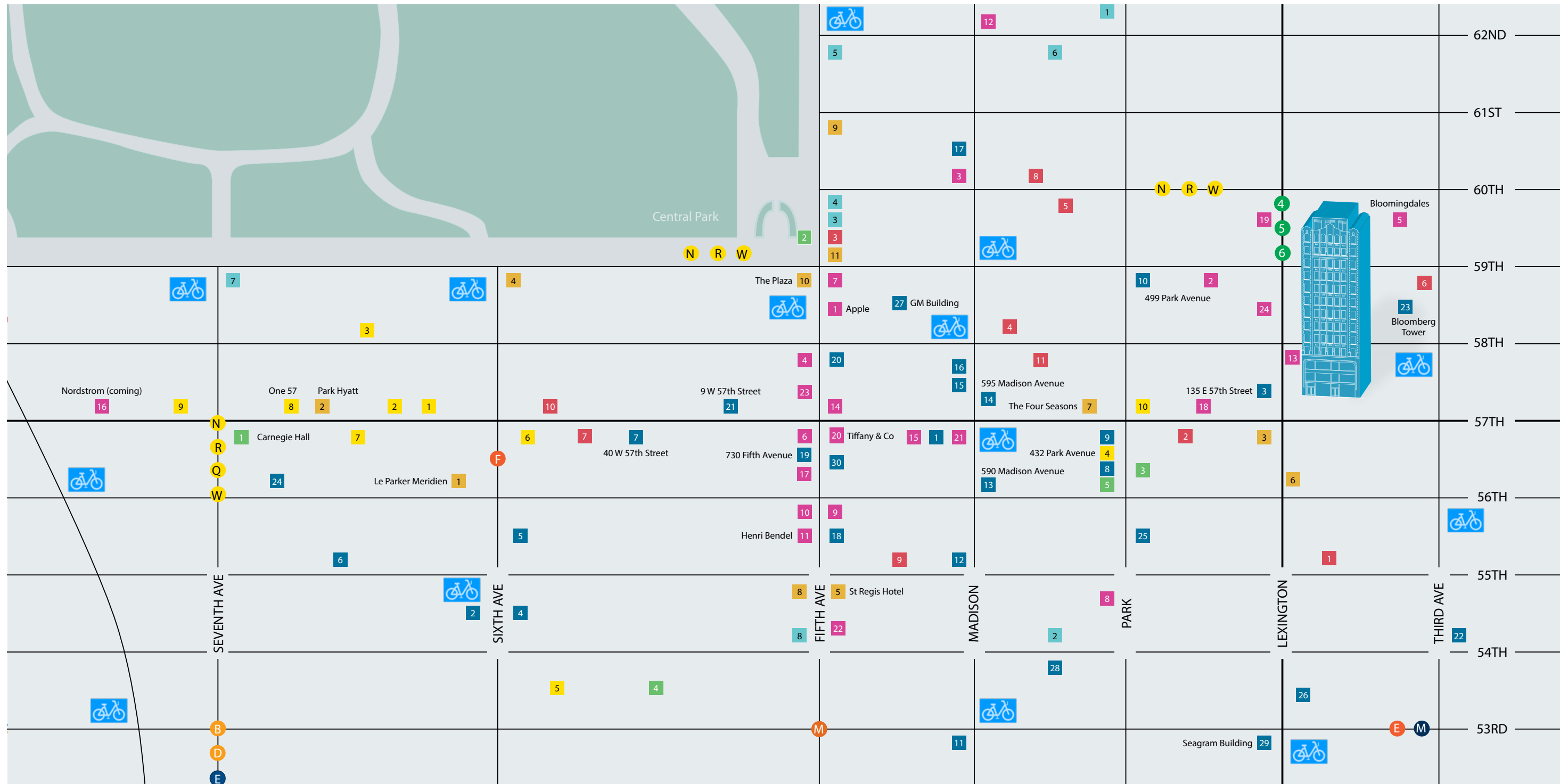
Card Key Security System Providing Heightened Security, Increased Convenience, & Guest Recognition

Fiber Optic Cable Throughout the Property Provides Exceptional Speed & Security for Your Data

200 Amp Service, Nearly Double the Wattage of Many Other Buildings

Emergency Generator Ensures a Rapid Supply of Light & Power to The Building

Walk, Bike or Ride to The Best of NYC



 CITI BIKE STATION

- |  RESIDENTIAL |  RESTAURANTS |  HOSPITALITY |  CLUBS |  ATTRACTIONS |  RETAIL |  OFFICE BUILDINGS |
|---|---|---|---|---|--|--|
| 1. 111 W 57th Street | 1. Angus Club Steakhouse | 1. Le Parker Meridien | 1. Colony Club | 1. Carnegie Hall | 1. Apple | 1. 12 E 57th Street |
| 2. 123 W 57th Street | 2. BLT Steak | 2. Park Hyatt | 2. CORE Club | 2. Central Park | 2. Banana Republic | 2. 1345 Avenue of The Americas |
| 3. 150 Central Park South | 3. Harry Cipriani | 3. Renaissance NY Hotel 57 | 3. Doubles Club | 3. Heritage Auctions | 3. Barneys | 3. 135 E 57th Street |
| 4. 432 Park Avenue | 4. Lavo | 4. Ritz Carlton | 4. Harmonie Club | 4. MoMA | 4. Bergdorf Goodman | 4. 1350 Avenue of The Americas |
| 5. 53 W 53rd Street | 5. Le Bilboquet | 5. St Regis Hotel | 5. Knickerbocker Club | 5. Phillips Gallery | 5. Bloomingdales | 5. 1370 Avenue of The Americas |
| 6. Hemisphere House | 6. Le Cirque | 6. The Fitzpatrick Hotel | 6. Links Club | | 6. Bulgari | 6. 156 W 56th Street |
| 7. Metropolitan Tower | 7. Nobu | 7. The Four Seasons | 7. NY Athletic Club | | 7. Cartier | 7. 40 W 57th Street |
| 8. One 57 | 8. Philippe | 8. The Peninsula Hotel | 8. University Club | | 8. Ferrari | 8. 432 Park Avenue |
| 9. Osbourne Apartment House | 9. Polo Bar | 9. The Pierre | | | 9. Giorgio Armani | 9. 450 Park Avenue |
| 10. Ritz Tower | 10. Quality Italian | 10. The Plaza | | | 10. Harry Winston | 10. 499 Park Avenue |
| | 11. Tao | 11. The Sherry Netherland | | | 11. Henri Bendel | 11. 510 Madison Avenue |
| | | | | | 12. Hermes | 12. 550 Madison Avenue |
| | | | | | 13. Jonathan Adler | 13. 590 Madison Avenue |
| | | | | | 14. Louis Vuitton | 14. 595 Madison Avenue |
| | | | | | 15. Nike | 15. 598 Madison Avenue |
| | | | | | 16. Nordstrom (coming) | 16. 600 Madison Avenue |
| | | | | | 17. Prada | 17. 660 Madison Avenue |
| | | | | | 18. Saks Off 5th | 18. 717 Fifth Avenue |
| | | | | | 19. Sephora | 19. 730 Fifth Avenue |
| | | | | | 20. Tiffany & Co | 20. 745 Fifth Avenue |
| | | | | | 21. Tourneau | 21. 9 W 57th Street |
| | | | | | 22. Valentino | 22. 909 Third Avenue |
| | | | | | 23. Van Cleef & Arpels | 23. Bloomberg Tower |
| | | | | | 24. Victoria's Secret | 24. Carnegie Hall Tower |
| | | | | | | 25. Citadel at 425 Park |
| | | | | | | 26. Citigroup Center |
| | | | | | | 27. GM Building |
| | | | | | | 28. Lever House |
| | | | | | | 29. Seagram Building |
| | | | | | | 30. Trump Tower |